

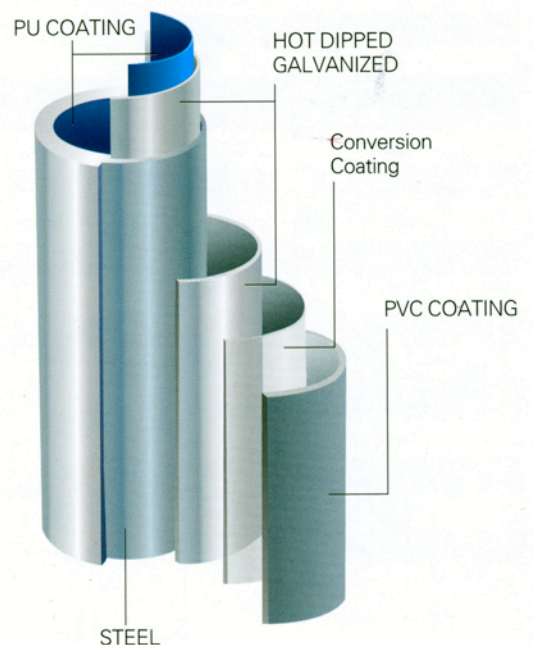
PVC COATED



When you're dealing with the world's most corrosive environments, like Chemical fertilizer plants, Gas Transmission Lines, Offshore platforms, Water and Waste Treatment Plants' just any normal rigid conduit won't do.

The Process of Manufacturing PVC-Coated Conduit

1. The process begins with high quality hot rolled coil.
2. Produced by the electric resistance welding (ERW) process, removed the welding on-line, smooth cut ends ,the finished tube is uniform in OD size, wall thickness, and ductility
3. The finished tube is immersed in a molten zinc bath. This hot-dip galvanizing process enables the zinc to penetrate the steel, providing the best possible protection. After the tube is extracted from the zinc bath, super-heated steam is blown through the interior and over the outside of the conduit to remove any slag. The ends of the conduit are heated enough to blow excess zinc out of the thread cavities.
4. Ends are threaded, without burr and welding slag ,zinc-coating protected
5. Prior to the exterior PVC coating,2 mils of poly urethane is applied to the inside diameter as well as the threads of each conduit.
6. After preheating the conduit, rolled through liquid plastid , achieving complete coverage of 40 mils in thickness, without pinholes or bubbles.



The Process of Manufacturing PVC-Coated Fittings

Fittings are cleaned and then sprayed inside and outside with 2 mils of poly urethane. This gives the fittings corrosion protection on the exterior as well as the interior.

40 mils of PVC is applied to the exterior of the fitting.

Covers are coated with a molded flange, and conduit bodies are molded with a flat surface to ensure a superior seal.

CHEMICAL CATEGORY	Solvents	Fuels	Plating Solutions	Salts and Alkaline, Materials	Mild Acids	Strong or High-Purity Acids	Oxidizing Agents
EXAMPLES	excluding alcohols and aliphatic, Acetone, toluene, etc.	Jet fuel (alcohol based and Fuels aliphatic solvent based)	Chrome, nickel, copper, brass, Plating Solutions gold, zinc, etc.	Caustic soda, caustic potash, alkaline cleaners, etc.	Low-concentration hydrochloric, fruit acids, glycolic, etc.	Nitric, hydro fluoric, etc.	Bleach, chlorine, hydrogen peroxide, etc.
Steel	L	L	NR	NR	NR	NR	NR
ALUMINUM	L	L	NR	NR	NR	NR	NR
PE COATED	NR	L	F	F	S	F	F
HDG	L	L	NR	NR	NR	NR	NR
PVC CAOTED	NR	L	L	L	L	S	L

Chemical Compatibility Legend	
COMPATIBILITY RATING	SUITABILITY DESCRIPTION
L	Rated for all Fumes, Splash & Liquid
S	Rated only for Fumes & Splash
F	Rated for Fumes only
NR	Not Recommended

PVC COATED GALVANIZED RIGID METAL CONDUIT

(ANSI C80.1 UL 6 WWC581)

RAC Dimensions and Weights Chart
(Standard:UL6A ANSI C80.5 WW-C-540C)

SIZE	OD mm(in)	OD WITH PVC mm(in)	THICKNESS mm(in)	FINISHED THICKNESS* mm(in)	LENGHT m(ft)	U-WEIGHT kg/pcs (pound/pcs)	PACKING pcs/bundle
1/2	21.3	23.3	2.64	3.71	3.03	3.67	127
3/4	26.7	28.7	2.72	3.79	3.03	4.88	91
1	33.4	35.4	3.20	4.27	3.02	7.19	61
1 1/4	42.2	44.2	3.38	4.45	3.02	9.78	37
1 1/2	48.3	50.3	3.51	4.58	3.02	11.72	37
2	60.3	62.3	3.71	4.78	3.02	15.64	37
2 1/2	73.0	75.0	4.90	5.97	3.01	24.77	19
3	88.9	90.9	5.21	6.28	3.01	32.36	19
3 1/2	101.6	103.6	5.51	6.58	3.00	39.18	10
4	114.3	116.3	5.72	6.79	3.00	45.96	10
5	141.3	143.3	6.20	7.27	3.00	61.98	7
6	168.3	170.3	6.76	7.83	3.00	80.79	7

Notes: Norm ANSI C80.1/UL 6)

*:Thickness with PVC&PU coated

Couplings are packaged separately

PVC COATED RIGID COUPLING



Size	Lengths mm(in)	U-WEIGHT kg/pcs(pound/pcs)	PACKING Pcs/bundle
1/2	95.3	0.058	200
3/4	95.3	0.085	120
1	139.7	0.148	50
1 1/4	139.7	0.193	35
1 1/2	146.1	0.252	25
2	150.8	0.346	20
2 1/2	174.7	0.832	16
3	178.6	1.215	12
3 1/2	180.2	1.701	10
4	182.6	1.386	10
5	187.3	2.250	5
6	188.9	3.600	5

Conduit Nipples

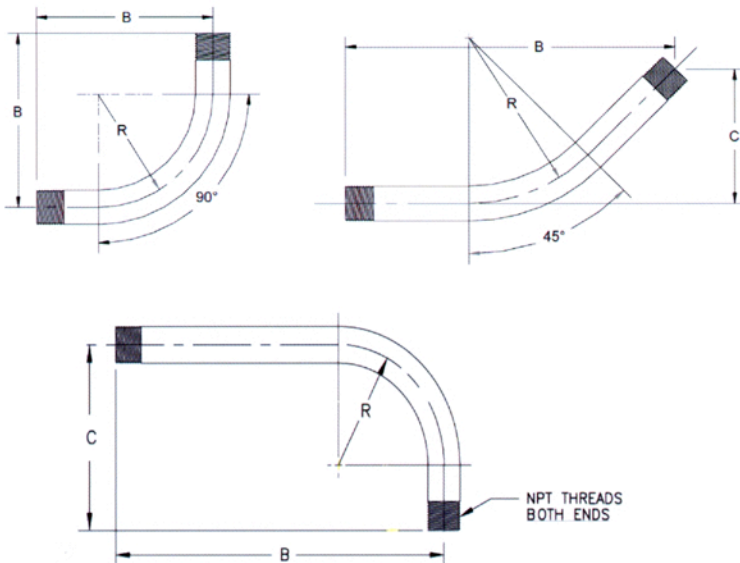
Size	OD (in)	Length Close (in)	Pipe Nipple Lengths(in)												
			1-1/2	2	2-1/2	3	3-1/2	4	4-1/2	5	5-1/2	6	8	10	10
1/2	0.840	1-1/8	1-1/2	2	2-1/2	3	3-1/2	4	4-1/2	5	5-1/2	6	8	10	10
3/4	1.015	1-3/8	1-1/2	2	2-1/2	3	3-1/2	4	4-1/2	5	5-1/2	6	8	10	10
1	1.315	1-1/2		2	2-1/2	3	3-1/2	4	4-1/2	5	5-1/2	6	8	10	10
1-1/4	1.660	1-5/8		2	2-1/2	3	3-1/2	4	4-1/2	5	5-1/2	6	8	10	10
1-1/2	1.900	1-3/4		2	2-1/2	3	3-1/2	4	4-1/2	5	5-1/2	6	8	10	10
2	2.375	2			2-1/2	3	3-1/2	4	4-1/2	5	5-1/2	6	8	10	10
2-1/2	2.875	2-1/2				3	3-1/2	4	4-1/2	5	5-1/2	6	8	10	10
3	3.500	2-5/8					3	3-1/2	4	4-1/2	5	5-1/2	6	8	10
3-1/2	4.000	2-3/4							4	4-1/2	5	5-1/2	6	8	10
4	4.500	2-7/8								4	4-1/2	5	5-1/2	6	8
5	5.563	3									4-1/2	5	5-1/2	6	8
6	6.625	3-1/8										4-1/2	5	5-1/2	6

Rigid Standard Elbows

Standard Radius				
Size	Radius	90°	45°	
		B Dim.	B Dim.	C Dim.
1/2	4	6-3/16	7-13/16	3-1/4
3/4	4-1/2	6-3/4	8-11/16	3-5/8
1	5-3/4	8-5/8	9-3/16	3-13/16
1-1/4	7-1/4	10-1/16	10-11/16	4-7/16
1-1/2	8-1/4	11-9/16	11-13/16	4-7/8
2	9-1/2	14-1/16	14-7/8	6-1/8
2-1/2	10-1/2	16	18-5/16	7-9/16
3	13	19-11/16	20-9/16	8-1/2
3-1/2	15	22-3/16	23-3/16	9-5/8
4	16	23-1/8	24-1/2	10-1/8
5	24	36-1/8	38-1/4	15-7/8
6	30	42-15/16	42	17-3/8

Rigid Special Elbows

Standard Radius				
Radius	Radius	90°	45°	
		B Dim.	B Dim.	C Dim.
12	1 thru 2-1/2	21	23-7/8	9-7/8
15	1 thru 3	24	26	10-3/4
18	1 thru 4	28	29-3/4	12-3/8
24	1 thru 4	35	35-3/4	14-13/16
30	1 thru 5	41	40	16-9/16
36	1 thru 6	47	44-1/4	18-5/16
42	1 thru 6	54	50-1/8	20-13/16
48	1 thru 6	60	54-3/8	22-9/16



YARD LIGHT ELBOWS

Size	B Dim.	B Dim.	C Dim.
1/2	4	18	6-3/16
3/4	4-1/2	18	6-3/4
1	5-3/4	18	8-5/8
1-1/4	7	19-1/4	10-1/4
1-1/2	8-1/4	20-1/2	11-5/8
2	9-1/2	21-1/2	14-1/2
2-1/2	10-1/2	22-1/2	16
3	13	25	19-1/4
3-1/2	15	27	22-3/4
4	16	28	24