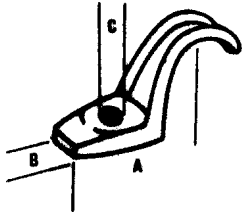


One Hole Malleable Straps and Clamp Backs

For Use with Rigid and IMC Conduit

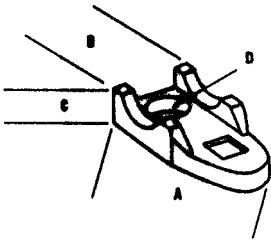
One Hole Strap

PART NUMBER	SIZE	DIMENSIONS			QUANTITY PER BOX	WEIGHT PER C
		A	B	C		
CL-50	½"	1 7/16"	5/8"	5/16"	50	6.2
CL-75	¾"	1 ¾"	¾"	5/16"	50	7.5
CL-100	1"	1 7/8"	7/8"	3/8"	50	9.2
CL-125	1¼"	2 3/8"	1"	7/16"	25	21.7
CL-150	1½"	2 ¾"	1 1/4"	7/16"	25	31.8
CL-200	2"	3 1/4"	1 3/8"	9/16"	5	44.2
CL-250	2½"	3 1/4"	1 3/8"	9/16"	5	66.3
CL-300	3"	5 5/16"	1 3/4"	9/16"	5	103.2
CL-350	3½"	5 1/2"	2 1/8"	3/4"	5	185.0
CL-400	4"	6 1/2"	2 1/4"	3/4"	5	221.0
CL-500	5"	7 3/8"	2 11/16"	3/4"	1	368.8
CL-600	6"	8 5/8"	3 1/8"	1 1/8"	1	631.3



Back Clamp

PART NUMBER	SIZE	DIMENSIONS				QUANTITY PER BOX	WEIGHT PER C
		A	B	C	D		
CLB-50	½"	2"	1"	1/2"	5/16"	50	8.4
CLB-75	¾"	2 5/16"	1 1/16"	1/2"	5/16"	50	12.2
CLB-100	1"	2 5/16"	1 1/4"	9/16"	3/8"	25	15.9
CLB-125	1¼"	3 7/16"	1 7/8"	3/4"	7/16"	25	22.1
CLB-150	1½"	3 13/16"	1 7/8"	13/16"	7/16"	25	35.4
CLB-200	2"	4 3/4"	1 15/16"	1"	9/16"	25	50.5
CLB-250	2½"	5 3/4"	2 7/16"	1"	9/16"	10	81.0
CLB-300	3"	6 3/4"	2 5/8"	1"	9/16"	10	82.9
CLB-350	3½"	7 1/8"	2 7/8"	1 1/16"	3/4"	5	148.2
CLB-400	4"	8 13/16"	3 1/16"	1 1/16"	3/4"	5	198.9
CLB-500	5"	10 1/8"	3 3/4"	1 3/16"	3/4"	1	343.8
CLB-600	6"	12 3/16"	4"	1 1/2"	3/4"	1	418.6



Material:

- Malleable Iron
- Zinc Finish



Commercial Fittings, Inc.
Irving, TX

Distributed exclusively by
Southwestern Electrical Sales, Inc.
Irving, Texas 75061
Toll free: 800-514-0311
Metro: 972-514-0311
Fax: 972-513-0319
Email: Sales@southwesternelectricalsales.com